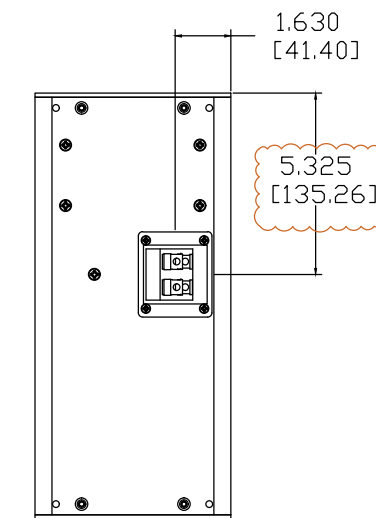
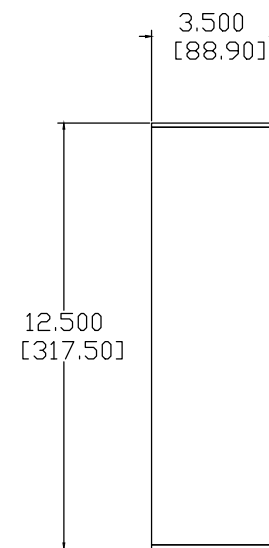
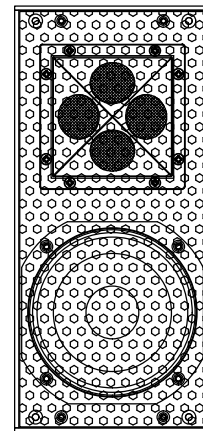
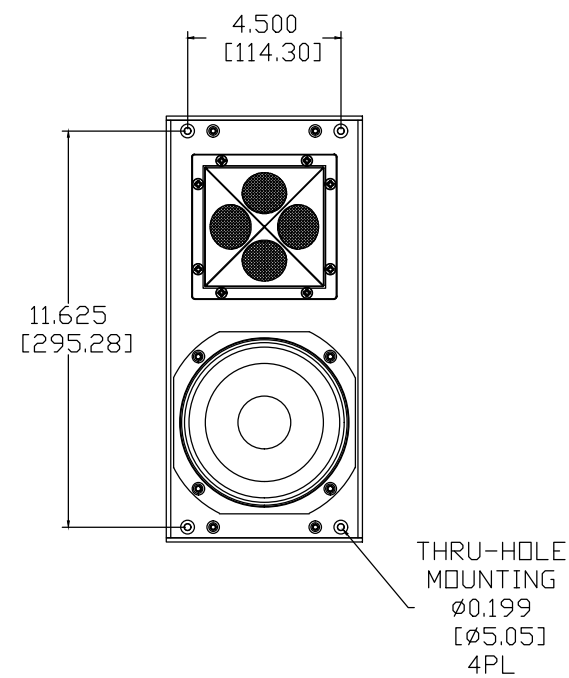
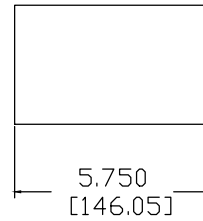
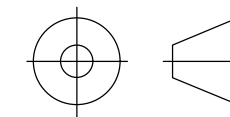


REVISIONS				
ECN	REV.	DESCRIPTION	DATE	APPROVED
17002	A	RELEASE FOR PRODUCTION	10-12-18	
20028	B	UPDATE CROSSOVER HOLE PATTERN	06-24-20	
21036	C	UPDATE WITH BUTYL TAPE END CAPS	07-07-21	



NOTES:

- 1: MATERIAL - SPL5 EXTRUSION UNLESS OTHERWISE SPECIFIED
- 2: FINISH - TBD



"THIRD ANGLE" PROJECTION

PROPRIETARY INFORMATION  
THE DESIGNS, INFORMATION, AND DATA CONTAINED HEREIN ARE PROPRIETARY AND ARE SUBMITTED IN CONFIDENCE, AND SHALL NOT BE DISCLOSED, USED OR DUPLICATED IN WHOLE OR IN PART, FOR ANY PURPOSES WHATSOEVER, WITHOUT THE PRIOR WRITTEN PERMISSION OF JAMES LOUDSPEAKER LLC, 2185 PARK PL, MINDEN, NV 89423. THIS LEGEND SHALL BE MARKED ON ANY REPRODUCTIONS HEREOF IN WHOLE OR IN PART. RECEIPT OF THIS DOCUMENT SHALL BE DEEMED TO BE AN ACCEPTANCE OF THE CONDITIONS SPECIFIED HEREIN.

JAMES LOUDSPEAKER

OW52Q

EXTERNAL DIMENSIONS

P/N: -

DWR #: 181012-S301

REVISED BY: S. LDESCH

DRAWN BY: S. LDESCH

DATE: 10-12-18

APPROVED:

DRAFTING APPROVED:

SCALE:

TOLERANCES: ANG: ± = .5° FRACT. ± = 1/32  
DECIMALS: .XX ± = .01 .XXX ± = .005

REVISION: C

SHEET 1 OF 4