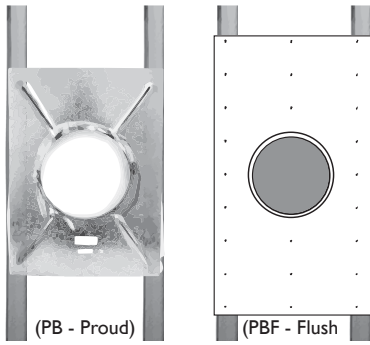


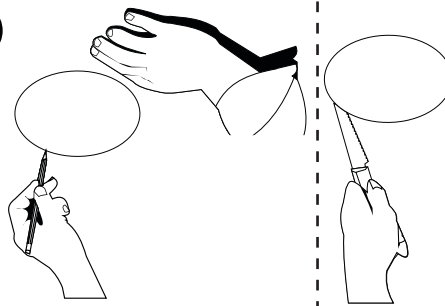
QXC SERIES SHEETROCK INSTALLATION

1A



For new installations, we recommend using our PB/PBF boards to match speaker cutout exactly. See the PB/PBF installation guide for more info.

1B



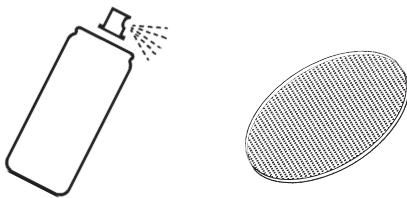
For existing installations, mark a cut-out circle on the ceiling/wall. (Reference the sizing chart to find the correct dimension for your speaker.) Then cut along your traced line to cut a hole in the ceiling/wall material.

Model	Cutout Dimension
QXC620	Ø 8.313" (211mm)
QXC820	Ø 10.125" (257mm)
QXC8S-R/S	Ø 10.125" (257mm)
QXC10S-R/S	Ø 11.950" (304mm)



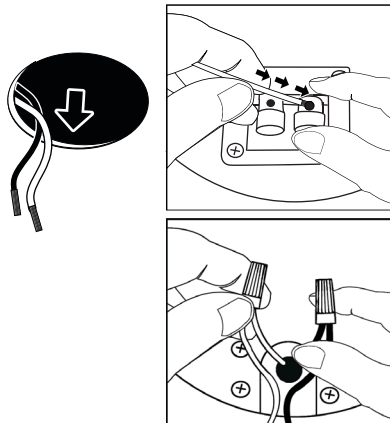
Installation Video

1C



If desired, the speaker grille can be painted to better match the installation environment.

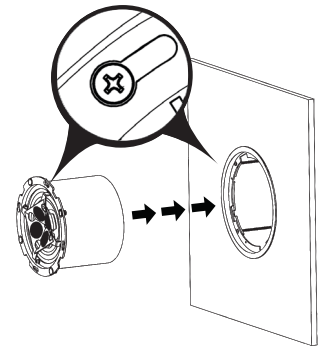
2



Locate the wire in the ceiling/wall and strip the wire ends 1/2" then connect the speaker wire to the speaker terminals observing the correct polarity.

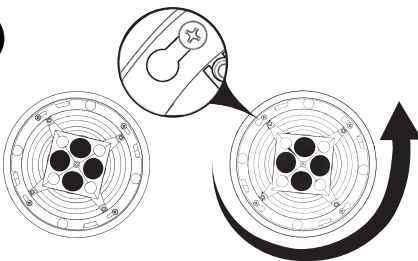
Note: Marine models will have a pig tail wire. Use waterproof wire nuts to connect speaker wire to the source wire.

3



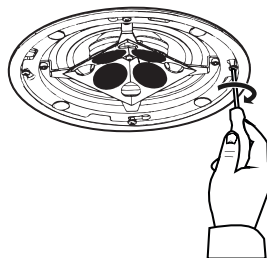
Insert the speaker into the frame, lining the 4 screws with the 4 round key holes.

4



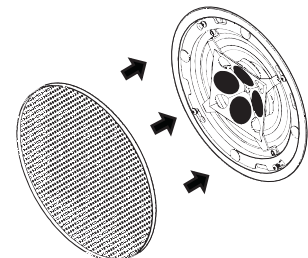
Insert the speaker into the frame, lining the 4 screws with the 4 round key holes.

5



Tighten the 4 screws using a Philips screw driver.

6



Attach Magnetic grille to complete the installation.

Note: As noted in step 4, if you need to align the square grille, then loosen the four bracket screws so that the entire speaker can be adjusted.